

Kitsap Transit

Connecting Communities

PRESS RELEASE

Fast-ferry service to be suspended July 22-27 prior to opening of new Seattle passenger-only ferry terminal at Pier 50

July 2, 2019

Kitsap Transit Contact: Sanjay Bhatt, 360-824-4926, sanjayb@kitsaptransit.com

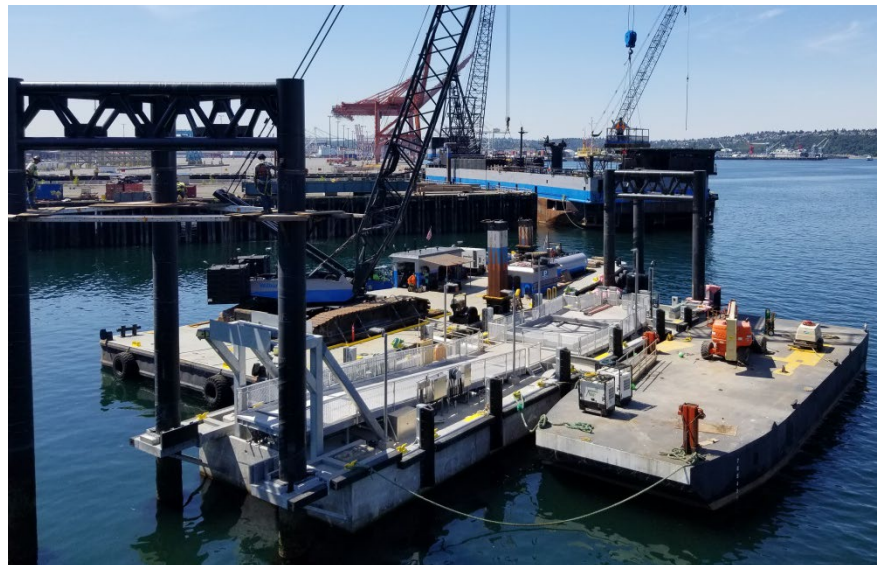
King County Metro Contact: Travis Shofner, 206-263-5679, tshofner@kingcounty.gov

BREMERTON, Wash. – Kitsap Transit will suspend fast-ferry service starting on July 22 while construction crews move a gangway from its current location at Pier 52 in Seattle and connect it to a new passenger-only ferry terminal building at Pier 50.

Due to the Seattle dock closure, neither Kitsap Fast Ferries nor King County Water Taxi will operate service during the week of July 22. These services are anticipated to resume on Monday, July 29.

Kitsap Fast Ferry and King County Water Taxi customers have been boarding from the temporary location at Pier 52 since August 2017.

The new covered facility, located on the south side of Colman Dock, will have room for about 500 passengers and is part of a larger project to [renovate Colman Dock](#). The facility will connect downtown Seattle with West Seattle, Vashon and the Kitsap Peninsula. A pedestrian bridge will connect the Washington State Ferries (WSF) main terminal and the passenger-only ferry terminal.



During the week of July 22, the current gangway at Pier 52 will be connected to the new facility at Pier 50 and the float seen above.

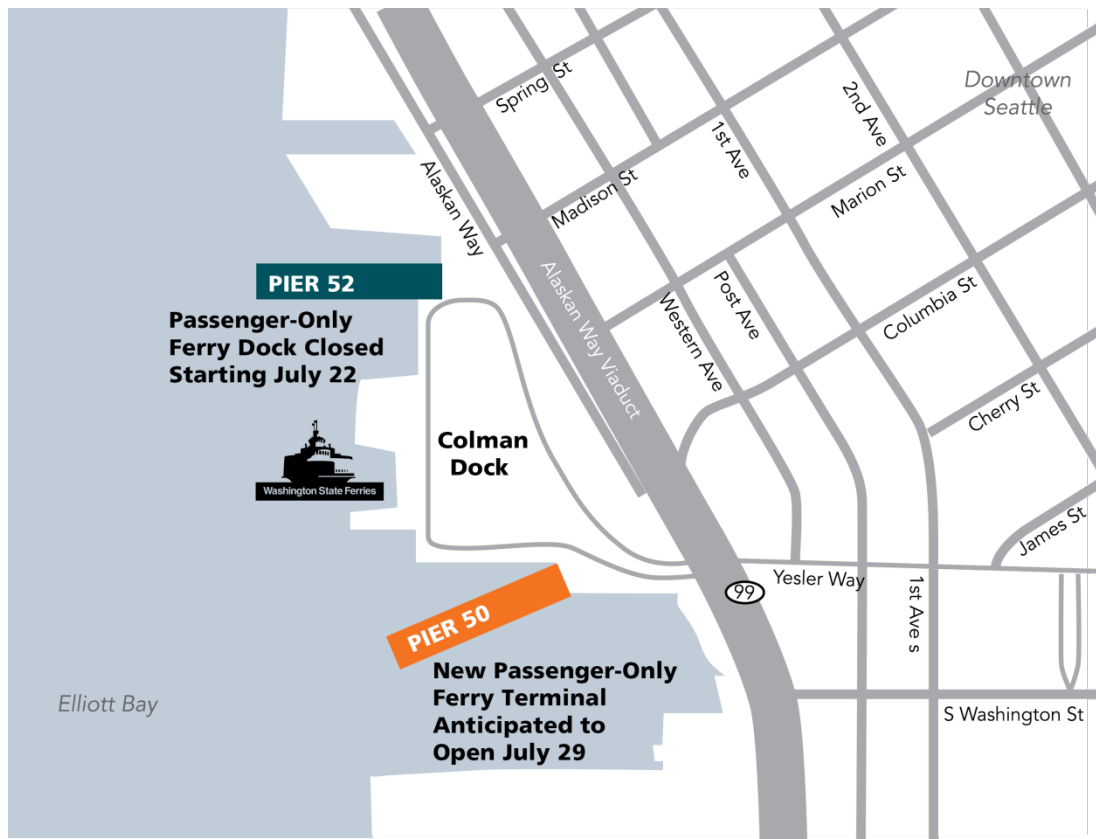
How to Get Around During the Service Disruption

During the service disruption, customers who typically ride the Bremerton Fast Ferry can ride WSF’s Bremerton-Seattle service; those who ride the Kingston Fast Ferry can ride WSF’s Bainbridge-Seattle service. Kitsap Fast Ferries passholders should see a Kitsap Transit Marine Services Ambassador inside the main WSF terminal at Colman Dock in Seattle to obtain a ticket to ride WSF.

Customers who typically ride Kitsap Transit’s Routes 302 or 307 to the Kingston Ferry Terminal will need to explore bus routes serving the Bainbridge Terminal. The table below offers several transit options:

Park & Ride Lots	Direct Service to/from Bainbridge Ferry Terminal
George’s Corner, 27618 Hansville Rd NE, Kingston	#91
North Viking, 21992 Viking Way NW, Poulsbo	#390
Gateway Fellowship, 18901 8 th Ave NE, Poulsbo	#333, #338 Express
Clearwater Casino, SR 305 & Suquamish Way – Buses stop along SR 305 in front of casino	#91, #333, #338 Express, #390

Kingston Ride Fast Ferry Commuter customers should call 844.475.7433 before July 22 to understand how the Seattle dock closure will affect their bus trips.





Construction is nearing completion on a new passenger-only ferry terminal at Pier 50 in Seattle. A long covered walkway will provide shelter for customers in line.



View of new passenger-only ferry terminal at Pier 50 from pedestrian bridge connecting to Washington State Ferries (WSF) terminal. The new passenger ferry facility is anticipated to open to the public on July 29.

About Kitsap Transit

Kitsap Transit has been operating friendly, convenient public transit since 1983. The transit agency for Kitsap County carried more than 3.8 million riders in 2018 across a multi-modal system of routed buses, passenger ferries, paratransit shuttles, vanpools, and worker/driver buses for the Puget Sound Naval Shipyard.

Hablar español?

Por favor llame al 1-800-501-7433 durante las horas normales de oficina. El personal de servicios al cliente se conectará con un intérprete para ayudarle a responder sus preguntas.

Nagsasalita ka ba ng Tagalog?

Paki-tawagan ang numero 1-800-501-7433 normal na oras ng trabaho. Customer Service kawani ay kumonekta sa isang taga interpretor upang tulungan sagutin ang iyong katanungan.